



METROPOLITAN  
CEMETERIES BOARD



---

# FREMANTLE CEMETERY

## FACILITIES AND SERVICES



## ECHOING THE HISTORY OF A COLOURFUL PORT CITY

Established in 1899, Fremantle Cemetery is a place of great historical significance that continues to service the burial, cremation, entombment and memorialisation needs of the Western Australian community.



# CONTENTS

<b>BURIALS AT FREMANTLE</b> .....	4
Monumental Graves .....	4
Lawn Graves.....	4
Entombment.....	5
Natural Burials.....	5
Family Graves & Reunification .....	6
Grave Selections.....	6
<b>CREMATION AND CHAPEL FACILITIES</b> .....	7
The West Chapel.....	7
The East Chapel.....	7
Outdoor Committal Area.....	8
Catering .....	8
Viewing Room .....	8
<b>SUMMARY OF CHAPEL FACILITIES</b> .....	9
Memorials.....	10
<b>GENERAL INFORMATION</b> .....	10
Funeral Protocol .....	10
Office Hours.....	10
Cemetery Hours .....	10
Enquiries.....	10
<b>CATERING</b> .....	11

# BURIALS AT FREMANTLE

Fremantle offers traditional monumental, lawn and natural burial areas.

## Monumental Graves

Monumental graves are located in a variety of denominational non-grassed areas. Each gravesite can accommodate up to three interments. Cremated remains can also be interred in a grave. To ensure that all monumental work within the cemetery complies with cemetery by-laws, a monumental permit must be obtained from the Metropolitan Cemeteries Board (MCB) before monumental works can commence.

Applications for monumental permits are made to the MCB by a licenced Monumental Mason on behalf of clients.

## Lawn Graves

Fremantle Cemetery has a variety of lawn burial areas punctuated by eucalypt trees and manicured turf. These permit headstones only – up to a height of 1.05 metres.



Monumental graves



Lawn area graves

## Entombment

Winner of numerous architectural accolades, the Fremantle Mausoleum was opened in 2005.

Set amidst formally landscaped surrounds, the mausoleum comprises 1032 crypts in three distinctly different areas, each with its own special character – the Chapel area, the Terraces and the Garden Crypts.

Crypts are available for pre-purchase or at the time of need.

A number of below ground burial vaults have also been made available. For more information or to request a copy of our mausoleum brochure contact Client Services at Fremantle Cemetery on 1300 793 109. The mausoleum brochure can also be downloaded from our website at [www.mcb.wa.gov.au](http://www.mcb.wa.gov.au)



Fremantle Mausoleum

## Natural Burials

Natural burials at Fremantle provide a unique and sustainable final resting place with minimal disturbance to the natural bushland environment. With a natural burial, the body is returned to nature in a biodegradable coffin with materials made from natural fibres to allow remains to return to the earth and decompose naturally.

Graves remain unmarked and no monumental work is permitted within a natural burial area.



Natural Burials



Each grave is mapped and surveyed; ensuring the ability to relocate graves for both current and future generations.

Natural Burials at Fremantle are located within an elevated grove that overlooks the cemetery's splendid bush land gully. Bordered by traditional burial locations, this unique pocket of land will be progressively vegetated with natural bush land plant species as plots are utilised.



Children's Memorial Garden

## Family Graves & Reunification

When organising a burial many families don't realise that they may already have a family grave at Fremantle in which a recently departed loved one could be reunited with other family members.

The concept of reunifying family members within the one family grave is a heartfelt one that creates a site of cross-generational family importance.

If you do have a family grave at Fremantle then please make initial enquiries with the appropriate family members to discuss whether or not using an existing grave is viable. Your Funeral Director should be able to assist you in completing the appropriate paperwork if you choose to proceed.

Depending on the status of the Grant on the existing plot and the ability of the monumental work to host an additional inscription, reunification may also be a lower cost option.

## Grave Selections

If you have not already pre-purchased your plot and would like the opportunity to select the location, the Metropolitan Cemeteries Board offers selection appointments in which our staff will show you the areas that are available.

Selection appointments are offered for those wishing to pre-purchase so as to have their final arrangements in place but also for those who have recently suffered the loss of a loved one. A charge applies for this service. We strongly advise that a booking for a selection appointment be made as soon as is practicable if you are making arrangements for a pending funeral.

# CREMATION AND CHAPEL FACILITIES

Cremation, the preferred choice for many families, is offered at Fremantle Cemetery. Most cremations are preceded by a funeral service held in one of Fremantle's contemporary and tasteful chapels. The service culminates in the committal of the casket.

## The West Chapel

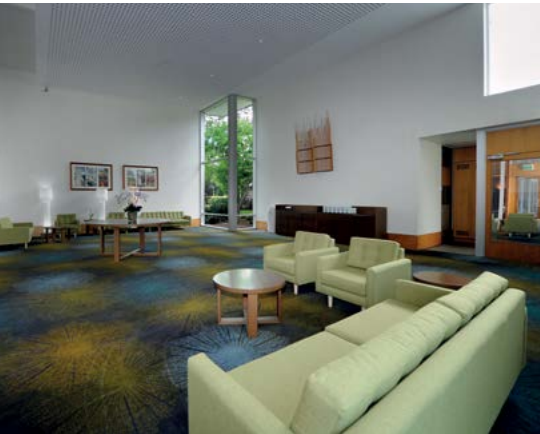
This is the largest of the chapels. It can accommodate up to 220 people seated, a further 250 people standing and 150 people outside. After the service guests can congregate in an adjacent condolence lounge. Catering can be organised via the Funeral Director.



East Chapel

## The East Chapel

This smaller chapel can accommodate up to 65 people seated, another 75 standing and 150 outside. The East Chapel also has its own separate condolence lounge for post-funeral gathering.



West Condolence Lounge



West Chapel

Both indoor chapels are equipped with a full multimedia audio visual system allowing families to choose to incorporate a visual tribute to the deceased within the funeral service.

All multimedia submissions and enquiries should be directed to your Funeral Director PRIOR to the service.

Livestreaming is available in both East and West Chapels. Please consult with the Funeral Director to make arrangements.



East Condolence Lounge

Both indoor chapels at Fremantle Cemetery are air conditioned.

### Outdoor Committal Area

This outdoor area is a popular choice during the warmer months and provides an informal alternative to the traditional chapel environment.



Outdoor Committal Area

### Catering

Catering within the condolence lounges can be coordinated through your Funeral Director. For those families who are not planning to utilise the condolence lounge, our on-site caterers are able to offer a take-home food service should a gathering be scheduled to occur at an alternate location. This service can also be arranged through your Funeral Director.

### Viewing Room

A viewing room is provided should you wish to witness the committal of the casket to the cremator. Please contact the Funeral Director should you wish to make use of this facility.



# SUMMARY OF CHAPEL FACILITIES

FREMANTLE	East Chapel MEDIUM	West Chapel LARGE	Outdoor (Central) Chapel
Times available+	9.00am-4.00pm Monday – Friday 9.00am-12.15pm Saturday Surcharge applies	9.00am-4.00pm Monday – Friday 9.00am-12.15pm Saturday Surcharge applies	9.00am-3.45pm Monday – Friday 9.00am-12.15pm Saturday Surcharge applies
Capacity	65 seated/75 standing + 150 additional standing with doors open	220 seated/180-250 standing + 150 additional standing with doors open	20 seated under cover. Standing room on lawn and surrounds for 100-150
Keyboard	No	No	No
Multimedia	Audio visual system provided	Audio visual system provided	Not available
Microphone	Fixed to lectern	Fixed to lectern	Fixed to lectern
Livestreaming	Yes	Yes	No. Can be arranged. Additional charges apply
Quiet room	Yes	Yes	No
Flower pedestals	1 available by request	2 available by request	Available by request
Lounge and facilities	Yes Cold fountain water Background music Catering available on request	Yes Cold fountain water Background music Catering available on request	No
Shade	N/A	N/A	Yes
Crucifix and candles	2 candles and 1 crucifix available on request	2 candles and 1 crucifix available on request	No
Wheelchair	Available on request	Available on request	Available on request
Disabled access/Toilets	Yes	Yes	No toilets, disabled access to area

+ At certain times of the year later chapel times may be available. Please check with your Funeral Director or Client Services on 1300 793 109.

## Memorials

Following cremation, many families establish a memorial – a lasting tribute to the departed – within the cemetery. The range of memorials available is as diverse and varied as the people being commemorated; from traditional rose memorials through to a simple, small commemorative plaque that provides a place of focus for future generations to congregate, reflect and remember. For those who do not live close to Fremantle Cemetery, memorial options are also offered at Rockingham Regional Memorial Park in Baldivis.

For those not wishing to establish a memorial within the grounds, a selection of decorative urns and items for the storage of cremated remains is available and can be viewed at our Fremantle and Rockingham offices.

# GENERAL INFORMATION

## Funeral Protocol

Mourners wishing to follow the funeral cortege should make their way to Samson Pavillion near the front entrance and wait for the funeral cortege to arrive. Alternatively, and generally for cremation services, mourners can wait at Carrington Pavillion, adjacent to the car park, and wait for the funeral cortege to arrive at the designated chapel. Funeral notices, as published by Funeral Directors, will generally advise where mourners should meet.

## Office Hours

The administration office is open Monday to Friday from 8:30am to 5:00pm and Saturdays from 8:30am to 12:30pm.

Please note: the office is not open on public holidays.

## Cemetery Hours

Fremantle Cemetery is open to the public between sunrise and sunset. Vehicle access is available 7am to 5pm Monday to Saturday and 7:30am to 5pm Sunday.

## Enquiries

Any enquiries regarding the facilities at the cemetery, to schedule a selection appointment or to discuss the range of memorial options, please contact Client Services at Fremantle Cemetery on 1300 793 109.

Further information regarding natural burials, the Fremantle Mausoleum and cremation memorials can be found by visiting Fremantle cemetery online at **[www.mcb.wa.gov.au](http://www.mcb.wa.gov.au)** or, alternatively, please contact us should you wish to have information posted to you.

# CATERING

Following a service within the chapel, many families opt to host a gathering for those attending the funeral service within one of the condolence lounges. All condolence lounges offer a comprehensive catering service that is provided by Celeste Catering, a specialist bereavement caterer.

Families wishing to make arrangements for catering within the lounges can make initial enquiries with their Funeral Director or, alternatively, can telephone Celeste Catering on 1300 37 27 74.

The telephone service is available 24 hours a day, 7 days a week and the team from Celeste is ready to assist you in making arrangements during what can be a particularly difficult time.



Celeste offers a wide variety of menu options including menus specifically tailored for those with dietary preferences (gluten free, vegetarian, etc) and a number of menus designed with specific cultural groups in mind.

The full range of menus can be obtained through your Funeral Director and can be viewed online at [www.celestecatering.com.au](http://www.celestecatering.com.au) and by selecting 'Enter WA Site'.





METROPOLITAN  
CEMETERIES BOARD



Fremantle Cemetery  
Carrington Street Palmyra WA 6163  
Tel: 1300 793 109  
Email: [mcb@mcb.wa.gov.au](mailto:mcb@mcb.wa.gov.au)  
[www.mcb.wa.gov.au](http://www.mcb.wa.gov.au)